

# X-33

- All features from other machines **PLUS**
- Seven foot Inspection Area
- Automated Operation - advances material, lowers arm, resets counter, roll-up process, adjust roll as necessary and stops at programmed length!



## FEATURES:

- ✓ Cut 15' wide material
- ✓ Reverse roll carpet & vinyl
- ✓ 'Infinite' variable speed control
- ✓ Open ended cradles
- ✓ Roll improver / roll squaring
- ✓ Pivoting, squaring load cradle
- ✓ "Clam Shell" load cradle
- ✓ Shuttle load cradle
- ✓ Large inspection area - 15' x 7'
- ✓ Auto-stop, foot & inch counter
- ✓ PLC control system
- ✓ Numbered keypad for easy measurement entry
- ✓ Photo sensor, auto-adjusting eyes
- ✓ Change/Sharpen blade reminder
- ✓ Touchscreen controls with security lock
- ✓ Two direction circular cutter
- ✓ Air powered roll up arm
- ✓ Air powered load side dump cradle
- ✓ Wrap around steel foot cable control
- ✓ Quick disconnect control panel
- ✓ Lifting brakes
- ✓ CE / Metric counter / 50 Hz power available
- ✓ Touch button roll-up and dumping
- ✓ Material can be removed at the touch of a button
- ✓ Expandable clamshell cradle at the touch of a button
- ✓ Motion sensors automatically sense any shifting and correct the roll by itself so it rolls up perfect

## SPECIFICATIONS:

POWER: 220 volts - single phase / 60 hz / 15 amps  
\*Also available in 50hz

BLADES: 5 1/2" circular, beveled edge  
SIZE: 17' 1" long x 11' 9" wide x 3' 10" high  
Limited Warranty: 1 year parts & labor

Meets all UL and CSA safety standards.



# X-33 Key Features

## One Person Operation



Wrap-around foot cable control, air-powered roll-up arm, speed control, auto-run feature, adjustable load cradle, and automatic anti-cone control provide for ease of use. All are standard features on the X-33!

## Adjustable Squaring Cradle



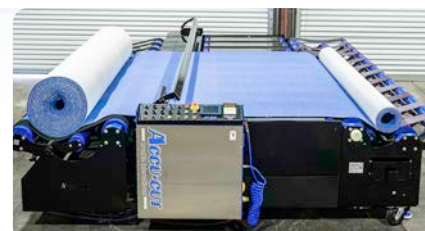
The X-33's load cradle can be adjusted in three ways: shuttle forward or backward for positioning, pivot for squaring the roll, and use the "clam shell" design to adjust for roll diameter. Effortlessly provides full control over the material!

## Circular Cutter



Self-sharpening circular blade rotates as it moves down the cutting track. The hold-down guard covers the blade and keeps material tight while cutting. Longer blade life reduces blade changes and increases efficiency!

## Inspect Material



The X-33's six-foot inspection area includes a stainless steel tabletop where material can easily be examined. Inspect the carpet and vinyl before it goes out the door!

## Automated Operation



Program in the desired measurement and press the "Go" button. The X-33 will advance the material, lower the hold-down arm, reset the counter, begin the roll-up process, monitor and adjust the roll as necessary, then stop at the programmed length. Automatically, effortlessly, and rapidly!

## Touch Screen PLC Control



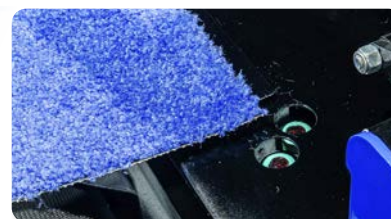
Includes a touchscreen foot & inch counter, preset cut storage system, security keypad, cut counter, change blade reminder, multiple product settings, and more. The machine will automatically stop precisely at the programmed length!

## Material Removal



Air-powered dumping mechanisms will remove the carpet or vinyl from both the roll-up cradle and the load cradle. Add a roll feeding table for the ultimate in cutting efficiency!

## Anti-Cone Control



As material moves across the tabletop, electric eyes detect any movement and quickly adjust the load cradle forward or backward to the proper position. Automatically eliminates any walking or coning!